

# Occupational Interest Profile (OIP) Reliability: South Africans, Xitsonga Language Group, Updated 2020

---

## Composition of the Sample

The sample consisted of South Africans tested by Psytech South Africa and collaborators during the period up to March 2020, both on GeneSys for Windows (up to June 2015) and GeneSys online (up to June 2019).

## Gender Composition of the Sample

Category	Frequency table: Sex			
	Count	Cumulative Count	Percent	Cumulative Percent
F	69	69	54,76190	54,7619
M	57	126	45,23810	100,0000
Missing	0	126	0,00000	100,0000

## Educational Composition of the Sample

Category	Frequency table: Education			
	Count	Cumulative Count	Percent	Cumulative Percent
Grade 12	37	37	29,36508	29,3651
Tertiary Cert / Trade	16	53	12,69841	42,0635
Tertiary	10	63	7,93651	50,0000
Post Graduate	7	70	5,55556	55,5556
< Matric	48	118	38,09524	93,6508
Missing	8	126	6,34921	100,0000

## Language Composition of the Sample

Category	Frequency table: Language			
	Count	Cumulative Count	Percent	Cumulative Percent
Xitsonga	126	126	100,0000	100,0000
Missing	0	126	0,0000	100,0000

## Language Group Composition of the Sample

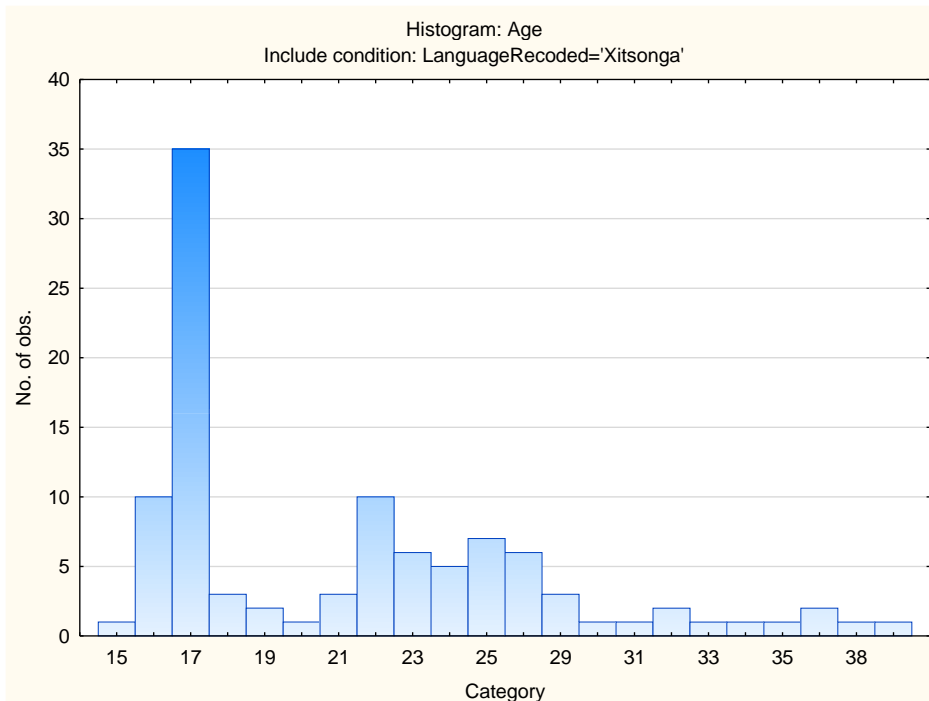
Category	Frequency table: Language Group			
	Count	Cumulative Count	Percent	Cumulative Percent
Indigenous	126	126	100,0000	100,0000
Missing	0	126	0,0000	100,0000

## Racial Composition of the Sample

Category	Frequency table: Race Recoded			
	Count	Cumulative Count	Percent	Cumulative Percent
African	123	123	97,61905	97,6190
Missing	3	126	2,38095	100,0000

## Age Composition and Distribution of the Sample

Variable	Descriptive Statistics:Age					
	Mean	Std.Dev	Minimum	Maximum	N	No.cases Missing
Age	21,63107	6,132508	15,00000	48,00000	103	23



## Internal Consistency Reliability on OIP Scales

<b>Scale</b>	<b>Scale description</b>	<b>Cronbach Alpha</b>
<b>VEN</b>	Need for excitement	0,55
<b>PHLEG</b>	Need for stability	0,77
<b>RAD</b>	Need for change	0,74
<b>GREGAR</b>	Need for people	0,61
<b>ASSERT</b>	Need for control	0,72
<b>PERS</b>	Persuasive	0,73
<b>SCI</b>	Scientific	0,76
<b>PRA</b>	Practical	0,72
<b>ADMIN</b>	Administrative	0,75
<b>NUR</b>	Nurturing (caring)	0,79
<b>ART</b>	Artistic	0,79
<b>LOG</b>	Logical (computational)	0,77