

# Clerical Test Battery (CTB2)

## Reliability: SA isiZulu Language Speakers, Updated 2022

### Sample Composition

The sample consisted of respondents who had completed any of the subtests of the Clerical Test Battery (CTB2) battery in the period March 2013 to March 2022. Since not all the respondents completed all the subtests, biographical information is reported separately.

### Sample Composition: Clerical Checking Subtest (CTB2C)

Category	Frequency table: Sex			
	Count	Cumulative Count	Percent	Cumulative Percent
F	681	681	65.16746	65.1675
M	364	1045	34.83254	100.0000
Missing	0	1045	0.00000	100.0000

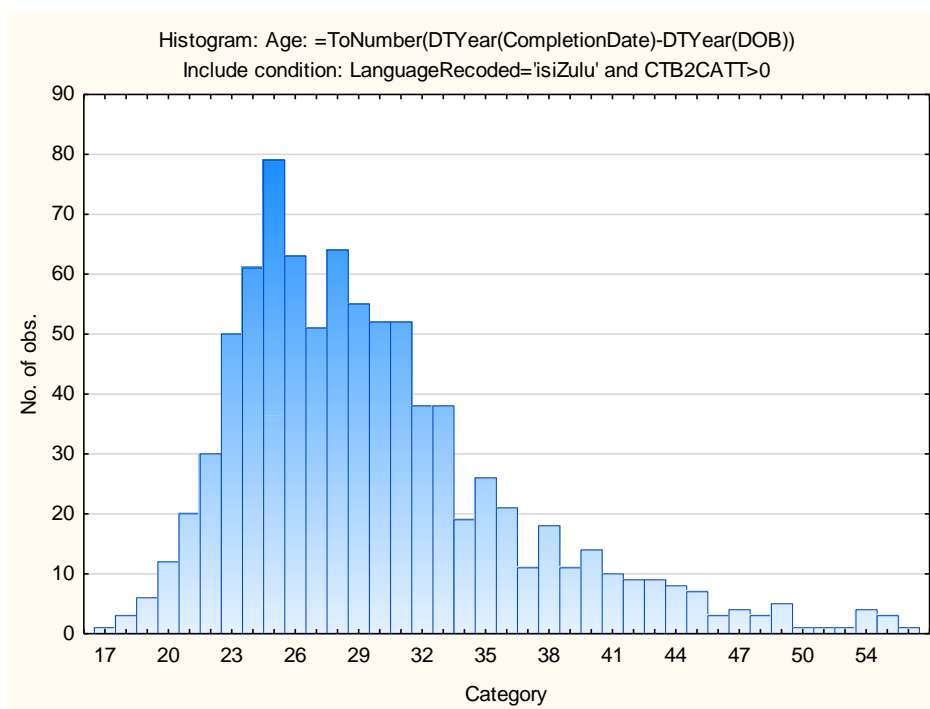
Category	Frequency table: Education			
	Count	Cumulative Count	Percent	Cumulative Percent
Grade 12	417	417	39.90431	39.9043
Tertiary Cert / Trade	312	729	29.85646	69.7608
Tertiary	208	937	19.90431	89.6651
Post Graduate	67	1004	6.41148	96.0766
< Matric	7	1011	0.66986	96.7464
Missing	34	1045	3.25359	100.0000

Category	Frequency table: Race			
	Count	Cumulative Count	Percent	Cumulative Percent
Coloured	5	5	0.47847	0.4785
African	1001	1006	95.78947	96.2679
Missing	39	1045	3.73206	100.0000

Category	Frequency table: Language			
	Count	Cumulative Count	Percent	Cumulative Percent
isiZulu	1045	1045	100.0000	100.0000
Missing	0	1045	0.0000	100.0000

Category	Frequency table: Language Group			
	Count	Cumulative Count	Percent	Cumulative Percent
Indigenous	1045	1045	100.0000	100.0000
Missing	0	1045	0.0000	100.0000

Variable	Descriptive Statistics: Age					
	Mean	Std.Dev	Minimum	Maximum	N	No.cases Missing
Age	29.72454	6.717477	17.00000	59.00000	864	181



## Sample Composition: Numerical Subtest (CTB2N)

Category	Frequency table: Sex			
	Count	Cumulative Count	Percent	Cumulative Percent
F	677	677	65.09615	65.0962
M	363	1040	34.90385	100.0000
Missing	0	1040	0.00000	100.0000

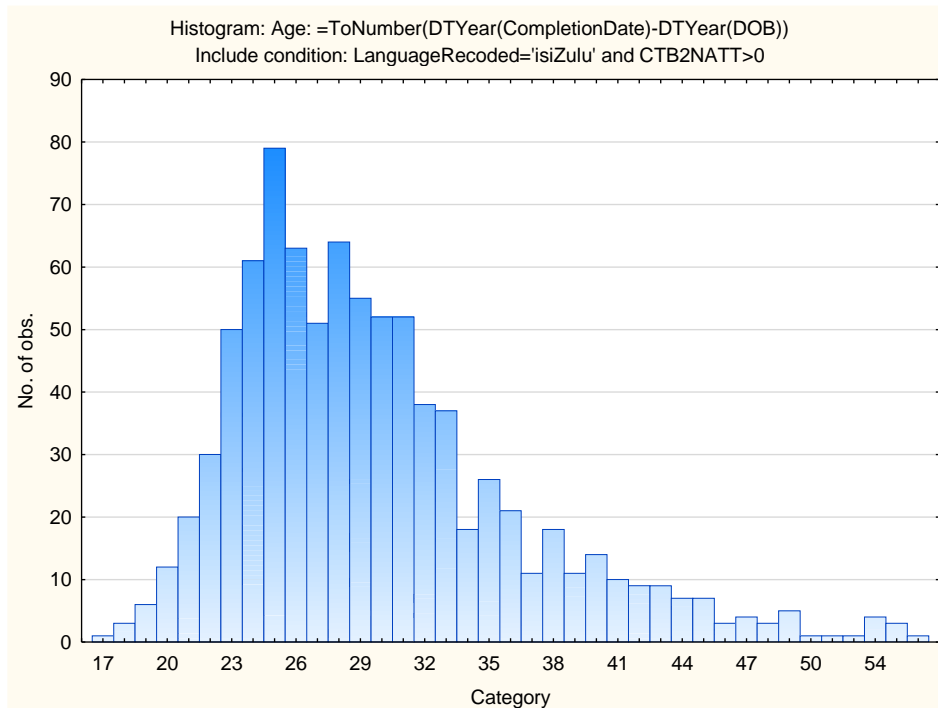
Category	Frequency table: Education			
	Count	Cumulative Count	Percent	Cumulative Percent
Grade 12	414	414	39.80769	39.8077
Tertiary Cert / Trade	310	724	29.80769	69.6154
Tertiary	208	932	20.00000	89.6154
Post Graduate	67	999	6.44231	96.0577
< Matric	7	1006	0.67308	96.7308
Missing	34	1040	3.26923	100.0000

Category	Frequency table: Race			
	Count	Cumulative Count	Percent	Cumulative Percent
Coloured	5	5	0.48077	0.4808
African	996	1001	95.76923	96.2500
Missing	39	1040	3.75000	100.0000

Category	Frequency table: Language			
	Count	Cumulative Count	Percent	Cumulative Percent
isiZulu	1040	1040	100.0000	100.0000
Missing	0	1040	0.0000	100.0000

Category	Frequency table: Language Group			
	Count	Cumulative Count	Percent	Cumulative Percent
Indigenous	1040	1040	100.0000	100.0000
Missing	0	1040	0.0000	100.0000

Variable	Descriptive Statistics: Age					
	Mean	Std.Dev	Minimum	Maximum	N	No.cases Missing
Age	29.69919	6.708992	17.00000	59.00000	861	179



### Sample Composition: Clerical Spelling Subtest (CTB2S)

Category	Frequency table: Sex			
	Count	Cumulative Count	Percent	Cumulative Percent
F	620	620	64.71816	64.7182
M	338	958	35.28184	100.0000
Missing	0	958	0.00000	100.0000

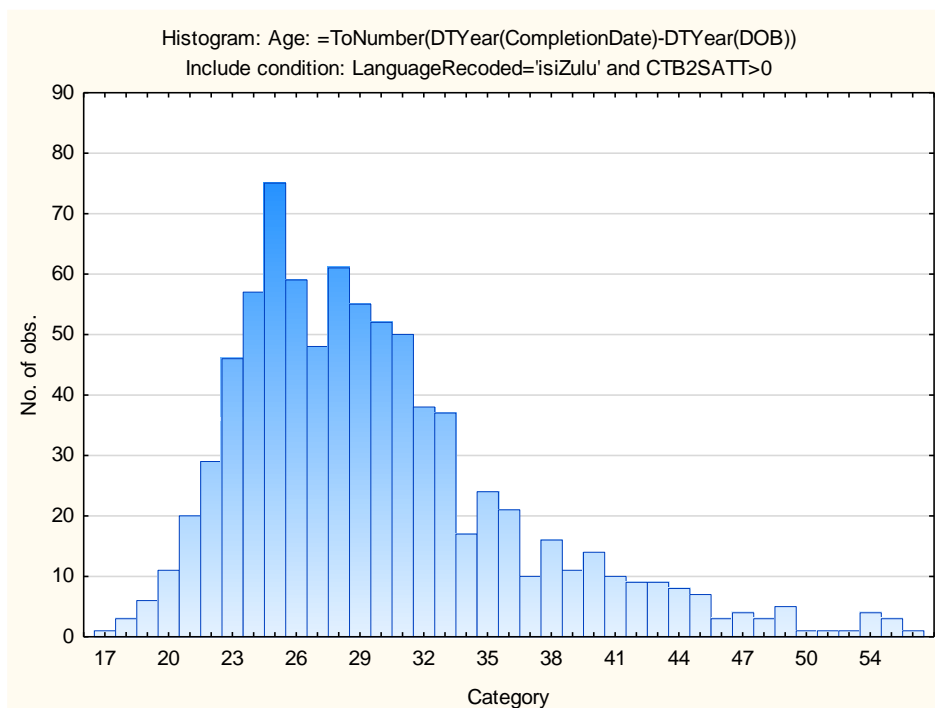
Category	Frequency table: Education			
	Count	Cumulative Count	Percent	Cumulative Percent
Grade 12	392	392	40.91858	40.9186
Tertiary Cert / Trade	282	674	29.43633	70.3549
Tertiary	203	877	21.18998	91.5449
Post Graduate	60	937	6.26305	97.8079
< Matric	2	939	0.20877	98.0167
Missing	19	958	1.98330	100.0000

Category	Frequency table: Race			
	Count	Cumulative Count	Percent	Cumulative Percent
Coloured	5	5	0.52192	0.5219
African	914	919	95.40710	95.9290
Missing	39	958	4.07098	100.0000

Category	Frequency table: Language			
	Count	Cumulative Count	Percent	Cumulative Percent
isiZulu	958	958	100.0000	100.0000
Missing	0	958	0.0000	100.0000

Category	Frequency table: Language Group			
	Count	Cumulative Count	Percent	Cumulative Percent
Indigenous	958	958	100.0000	100.0000
Missing	0	958	0.0000	100.0000

Variable	Descriptive Statistics: Ae					
	Mean	Std.Dev	Minimum	Maximum	N	No.cases Missing
Age	29.80361	6.770313	17.00000	59.00000	830	128



## Sample Composition: Clerical Verbal Subtest (CTB2V)

Category	Frequency table: Sex			
	Count	Cumulative Count	Percent	Cumulative Percent
F	657	657	64.92095	64.9209
M	355	1012	35.07905	100.0000
Missing	0	1012	0.00000	100.0000

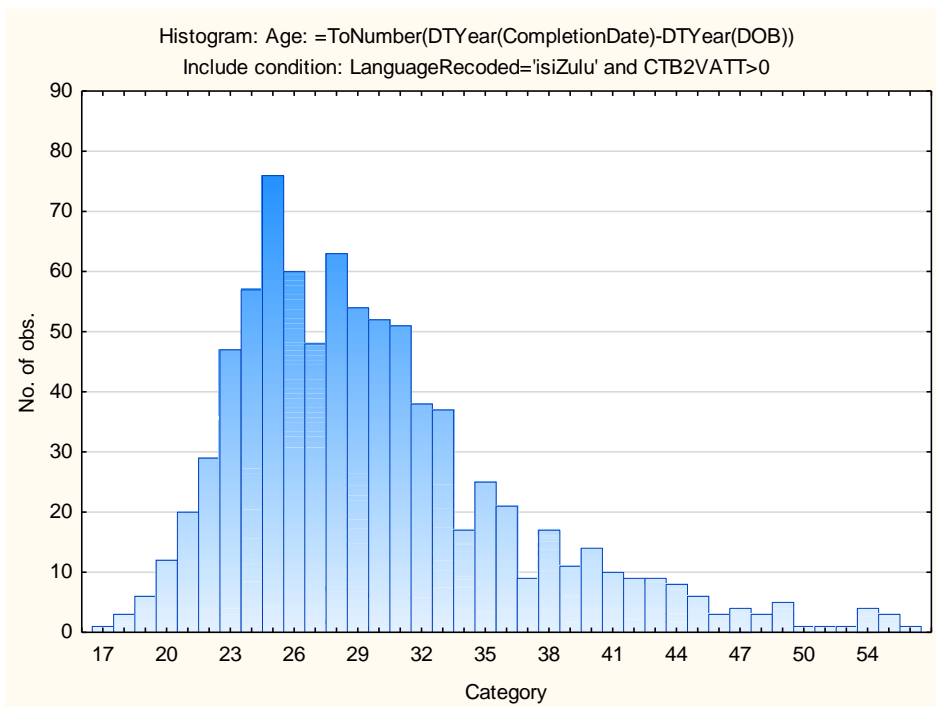
Category	Frequency table: Education			
	Count	Cumulative Count	Percent	Cumulative Percent
Grade 12	412	412	40.71146	40.7115
Tertiary Cert / Trade	294	706	29.05138	69.7628
Tertiary	204	910	20.15810	89.9209
Post Graduate	61	971	6.02767	95.9486
< Matric	7	978	0.69170	96.6403
Missing	34	1012	3.35968	100.0000

Category	Frequency table: Race			
	Count	Cumulative Count	Percent	Cumulative Percent
Coloured	5	5	0.49407	0.4941
African	968	973	95.65217	96.1462
Missing	39	1012	3.85375	100.0000

Category	Frequency table: Language			
	Count	Cumulative Count	Percent	Cumulative Percent
isiZulu	1012	1012	100.0000	100.0000
Missing	0	1012	0.0000	100.0000

Category	Frequency table: Language Group			
	Count	Cumulative Count	Percent	Cumulative Percent
Indigenous	1012	1012	100.0000	100.0000
Missing	0	1012	0.0000	100.0000

Variable	Descriptive Statistics: Age					
	Mean	Std.Dev	Minimum	Maximum	N	No.cases Missing
Age	29.76077	6.745693	17.00000	59.00000	836	176



## Cronbach Coefficient Alpha for Clerical Test Battery Subtests:

Subtest	Cronbach Coefficient Alpha
Clerical Checking Test	0.83
Numerical Reasoning Test	0.77
Spelling Test	0.74
Verbal Reasoning Test	0.95