

# Clerical Test Battery (CTB2)

## Reliability: SA Sesotho Language Speakers, Updated 2022

### Sample Composition

The sample consisted of respondents who had completed any of the subtests of the Clerical Test Battery (CTB2) battery in the period March 2013 to March 2022. Since not all the respondents completed all the subtests, biographical information is reported separately.

### Sample Composition: Clerical Checking Subtest (CTB2C)

Category	Frequency table: Sex			
	Count	Cumulative Count	Percent	Cumulative Percent
F	222	222	57.51295	57.5130
M	164	386	42.48705	100.0000
Missing	0	386	0.00000	100.0000

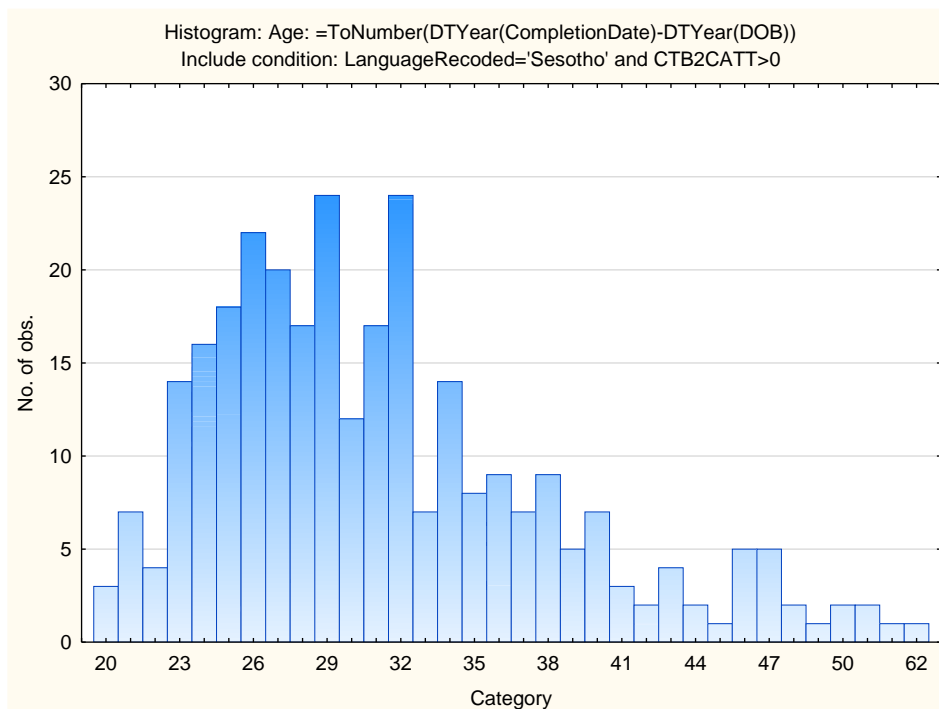
Category	Frequency table: Education			
	Count	Cumulative Count	Percent	Cumulative Percent
Grade 12	161	161	41.70984	41.7098
Tertiary Cert / Trade	107	268	27.72021	69.4301
Tertiary	60	328	15.54404	84.9741
Post Graduate	20	348	5.18135	90.1554
< Matric	6	354	1.55440	91.7098
Missing	32	386	8.29016	100.0000

Category	Frequency table: Race			
	Count	Cumulative Count	Percent	Cumulative Percent
Coloured	2	2	0.51813	0.5181
African	380	382	98.44560	98.9637
Missing	4	386	1.03627	100.0000

Category	Frequency table: Language			
	Count	Cumulative Count	Percent	Cumulative Percent
Sesotho	386	386	100.0000	100.0000
Missing	0	386	0.0000	100.0000

Category	Frequency table: Language Group			
	Count	Cumulative Count	Percent	Cumulative Percent
Indigenous	386	386	100.0000	100.0000
Missing	0	386	0.0000	100.0000

Variable	Descriptive Statistics: Age					
	Mean	Std.Dev	Minimum	Maximum	N	No.cases Missing
Age	31.27458	7.220709	20.00000	62.00000	295	91



### Sample Composition: Numerical Subtest (CTB2N)

Category	Frequency table: Sex			
	Count	Cumulative Count	Percent	Cumulative Percent
F	223	223	57.92208	57.9221
M	162	385	42.07792	100.0000
Missing	0	385	0.00000	100.0000

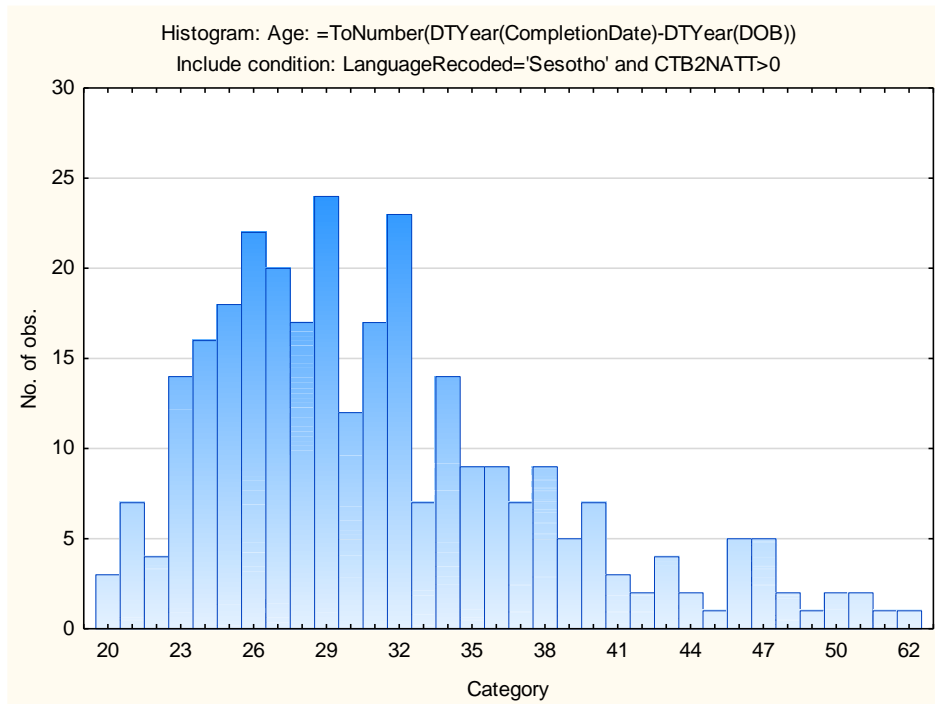
Category	Frequency table: Education			
	Count	Cumulative Count	Percent	Cumulative Percent
Grade 12	160	160	41.55844	41.5584
Tertiary Cert / Trade	107	267	27.79221	69.3506
Tertiary	61	328	15.84416	85.1948
Post Graduate	19	347	4.93506	90.1299
< Matric	6	353	1.55844	91.6883
Missing	32	385	8.31169	100.0000

Category	Frequency table: Race			
	Count	Cumulative Count	Percent	Cumulative Percent
Coloured	2	2	0.51948	0.5195
African	379	381	98.44156	98.9610
Missing	4	385	1.03896	100.0000

Category	Frequency table: Language			
	Count	Cumulative Count	Percent	Cumulative Percent
Sesotho	385	385	100.0000	100.0000
Missing	0	385	0.0000	100.0000

Category	Frequency table: Language Group			
	Count	Cumulative Count	Percent	Cumulative Percent
Indigenous	385	385	100.0000	100.0000
Missing	0	385	0.0000	100.0000

Variable	Descriptive Statistics: Age					
	Mean	Std.Dev	Minimum	Maximum	N	No.cases Missing
Age	31.28475	7.223846	20.00000	62.00000	295	90



## Sample Composition: Clerical Spelling Subtest (CTB2S)

Category	Frequency table: Sex			
	Count	Cumulative Count	Percent	Cumulative Percent
F	189	189	57.62195	57.6220
M	139	328	42.37805	100.0000
Missing	0	328	0.00000	100.0000

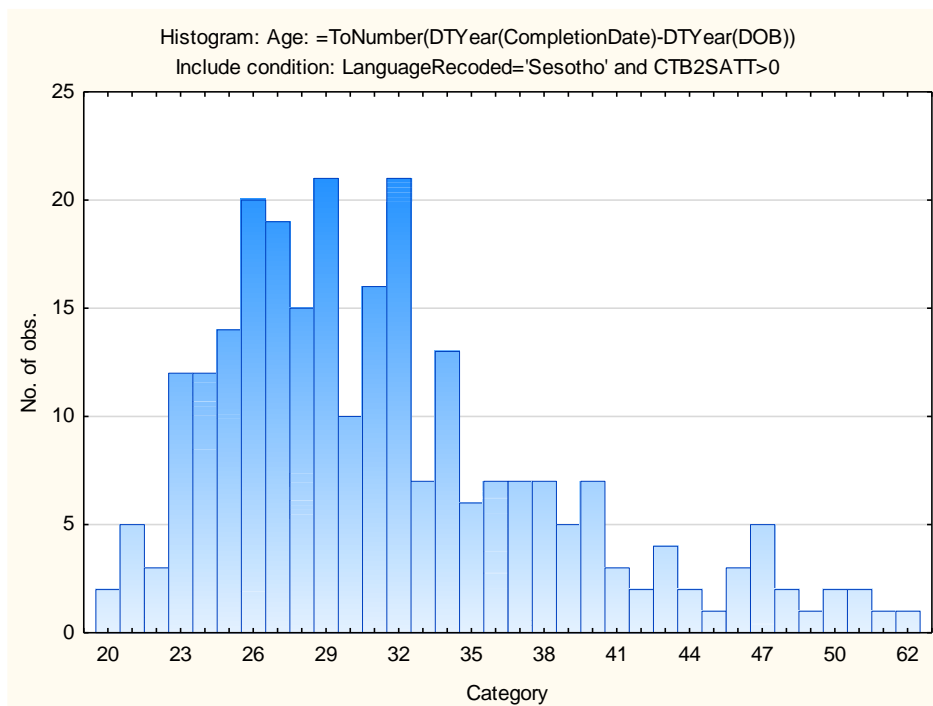
Category	Frequency table: Education			
	Count	Cumulative Count	Percent	Cumulative Percent
Grade 12	148	148	45.12195	45.1220
Tertiary Cert / Trade	82	230	25.00000	70.1220
Tertiary	50	280	15.24390	85.3659
Post Graduate	19	299	5.79268	91.1585
< Matric	5	304	1.52439	92.6829
Missing	24	328	7.31707	100.0000

Category	Frequency table: Race			
	Count	Cumulative Count	Percent	Cumulative Percent
Coloured	2	2	0.60976	0.6098
African	322	324	98.17073	98.7805
Missing	4	328	1.21951	100.0000

Category	Frequency table: Language			
	Count	Cumulative Count	Percent	Cumulative Percent
Sesotho	328	328	100.0000	100.0000
Missing	0	328	0.0000	100.0000

Category	Frequency table: Language Group			
	Count	Cumulative Count	Percent	Cumulative Percent
Indigenous	328	328	100.0000	100.0000
Missing	0	328	0.0000	100.0000

Variable	Descriptive Statistics: Age					No.cases Missing
	Mean	Std.Dev	Minimum	Maximum	N	
Age	31.57752	7.289177	20.00000	62.00000	258	70



### Sample Composition: Clerical Verbal Subtest (CTB2V)

Category	Frequency table: Sex			
	Count	Cumulative Count	Percent	Cumulative Percent
F	213	213	59.16667	59.1667
M	147	360	40.83333	100.0000
Missing	0	360	0.00000	100.0000

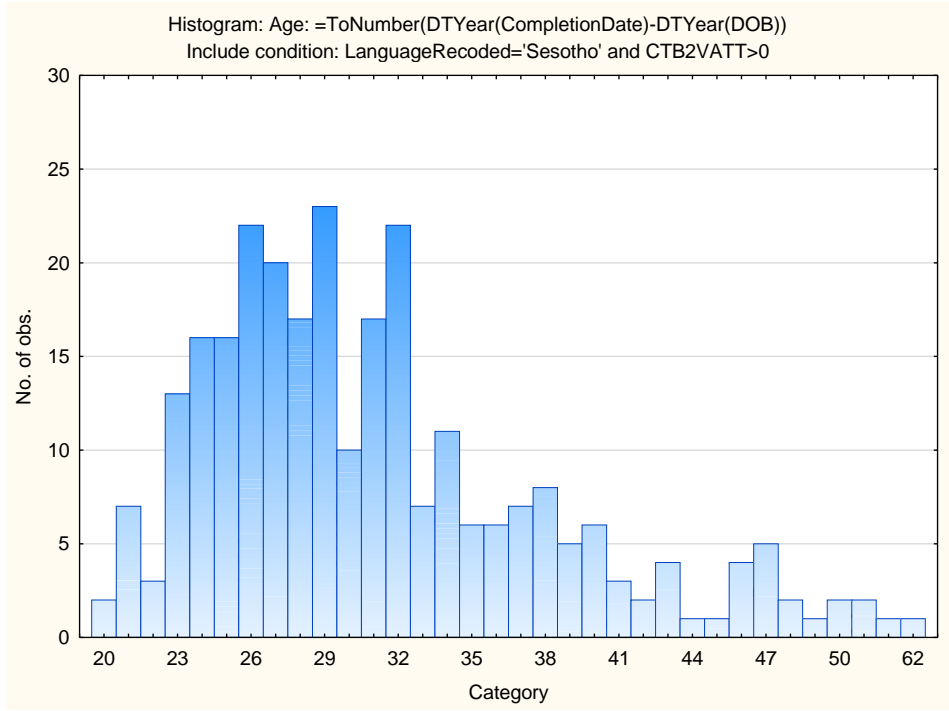
Category	Frequency table: Education			
	Count	Cumulative Count	Percent	Cumulative Percent
Grade 12	143	143	39.72222	39.7222
Tertiary Cert / Trade	102	245	28.33333	68.0556
Tertiary	58	303	16.11111	84.1667
Post Graduate	19	322	5.27778	89.4444
< Matric	6	328	1.66667	91.1111
Missing	32	360	8.88889	100.0000

Category	Frequency table: Race			
	Count	Cumulative Count	Percent	Cumulative Percent
Coloured	2	2	0.55556	0.5556
African	354	356	98.33333	98.8889
Missing	4	360	1.11111	100.0000

Category	Frequency table: Language			
	Count	Cumulative Count	Percent	Cumulative Percent
Sesotho	360	360	100.0000	100.0000
Missing	0	360	0.0000	100.0000

Category	Frequency table: Language Group			
	Count	Cumulative Count	Percent	Cumulative Percent
Indigenous	360	360	100.0000	100.0000
Missing	0	360	0.0000	100.0000

Variable	Descriptive Statistics: Age					
	Mean	Std.Dev	Minimum	Maximum	N	No.cases Missing
Age	31.17216	7.260618	20.00000	62.00000	273	87



## Cronbach Coefficient Alpha for Clerical Test Battery Subtests:

Subtest	Cronbach Coefficient Alpha
Clerical Checking Test	0.87
Numerical Reasoning Test	0.78
Spelling Test	0.78
Verbal Reasoning Test	0.97