

Critical Reasoning Test Battery – item-banked (CRTBi) – Reliability Group 4 South Africans, Indigenous Language Group, Updated 2021

Sample Composition

The sample consisted of South Africans tested by Psytech South Africa and collaborators from June 2015 to March 2021. Since not all respondents completed all the subtests of the CRTBi, biographical characteristics are reported separately for the different subtests.

Critical Numerical Reasoning Test: Biographical Composition

Category	Frequency table: Sex			
	Count	Cumulative Count	Percent	Cumulative Percent
M	99	99	57.89474	57.8947
F	72	171	42.10526	100.0000
Missing	0	171	0.00000	100.0000

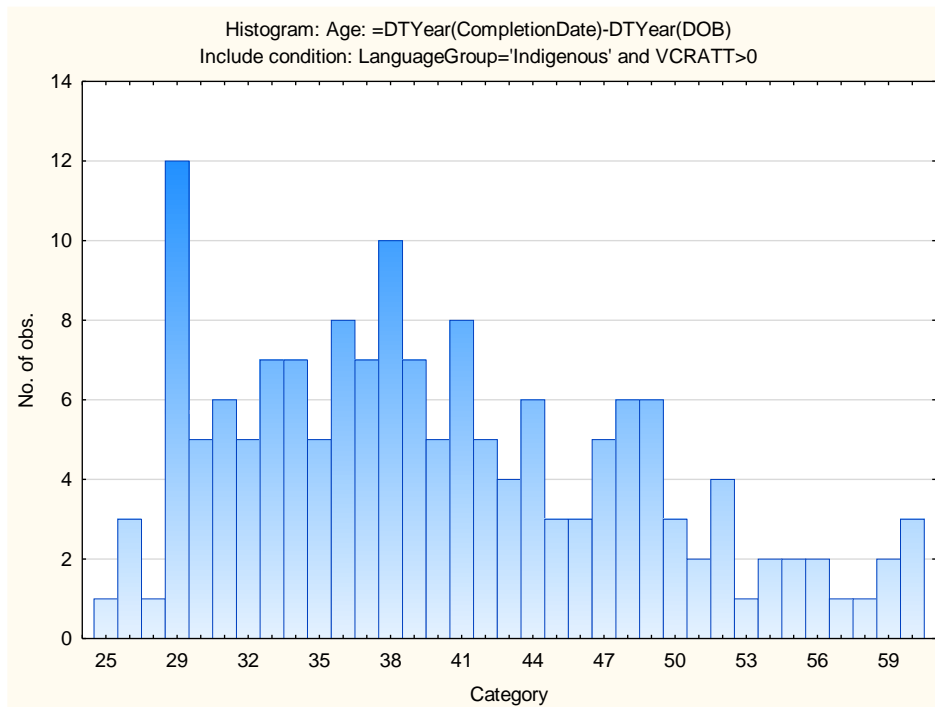
Category	Frequency table: Education			
	Count	Cumulative Count	Percent	Cumulative Percent
Grade 12	1	1	0.58480	0.5848
Post Graduate	79	80	46.19883	46.7836
Tertiary	71	151	41.52047	88.3041
Tertiary Cert / Trade	19	170	11.11111	99.4152
Missing	1	171	0.58480	100.0000

Category	Frequency table: Race			
	Count	Cumulative Count	Percent	Cumulative Percent
African	162	162	94.73684	94.7368
Missing	9	171	5.26316	100.0000

Category	Frequency table: Language			
	Count	Cumulative Count	Percent	Cumulative Percent
Setswana	41	41	23.97661	23.9766
isiXhosa	31	72	18.12865	42.1053
Sepedi	16	88	9.35673	51.4620
Sesotho	19	107	11.11111	62.5731
siSwati	4	111	2.33918	64.9123
isiZulu	40	151	23.39181	88.3041
Xitsonga	6	157	3.50877	91.8129
isiNdebele	5	162	2.92398	94.7368
Tshivenda	9	171	5.26316	100.0000
Missing	0	171	0.00000	100.0000

Category	Frequency table: Language Group			
	Count	Cumulative Count	Percent	Cumulative Percent
Indigenous	171	171	100.0000	100.0000
Missing	0	171	0.0000	100.0000

Variable	Descriptive Statistics					
	Mean	Std.Dev	Minimum	Maximum	N	No.cases Missing
Age	40.12025	8.485550	25.00000	60.00000	158	13



Critical Verbal Reasoning Test: Biographical Composition

Category	Frequency table: Sex			
	Count	Cumulative Count	Percent	Cumulative Percent
M	98	98	57.64706	57.6471
F	72	170	42.35294	100.0000
Missing	0	170	0.00000	100.0000

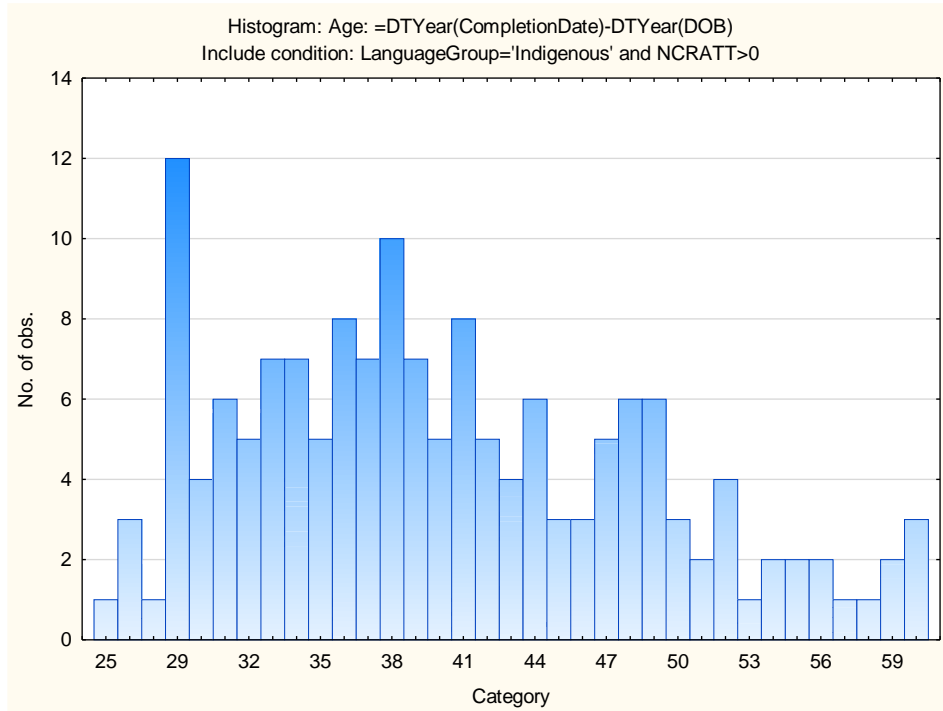
Category	Frequency table: Education			
	Count	Cumulative Count	Percent	Cumulative Percent
Grade 12	1	1	0.58824	0.5882
Post Graduate	78	79	45.88235	46.4706
Tertiary	71	150	41.76471	88.2353
Tertiary Cert / Trade	19	169	11.17647	99.4118
Missing	1	170	0.58824	100.0000

Category	Frequency table: Race			
	Count	Cumulative Count	Percent	Cumulative Percent
African	161	161	94.70588	94.7059
Missing	9	170	5.29412	100.0000

Category	Frequency table: Language			
	Count	Cumulative Count	Percent	Cumulative Percent
Setswana	41	41	24.11765	24.1176
isiXhosa	31	72	18.23529	42.3529
Sepedi	16	88	9.41176	51.7647
Sesotho	19	107	11.17647	62.9412
siSwati	4	111	2.35294	65.2941
isiZulu	39	150	22.94118	88.2353
Xitsonga	6	156	3.52941	91.7647
isiNdebele	5	161	2.94118	94.7059
Tshivenda	9	170	5.29412	100.0000
Missing	0	170	0.00000	100.0000

Category	Frequency table: Language Group			
	Count	Cumulative Count	Percent	Cumulative Percent
Indigenous	170	170	100.0000	100.0000
Missing	0	170	0.0000	100.0000

Variable	Descriptive Statistics					
	Mean	Std.Dev	Minimum	Maximum	N	No.cases Missing
Age	40.18471	8.473807	25.00000	60.00000	157	13



Internal Consistency Reliabilities for the Internet Critical Reasoning Test Battery Subtests

Subtest	Cronbach Coefficient Alpha
Critical Numerical Reasoning Test	0,651813
Critical Verbal Reasoning Test	0,851489